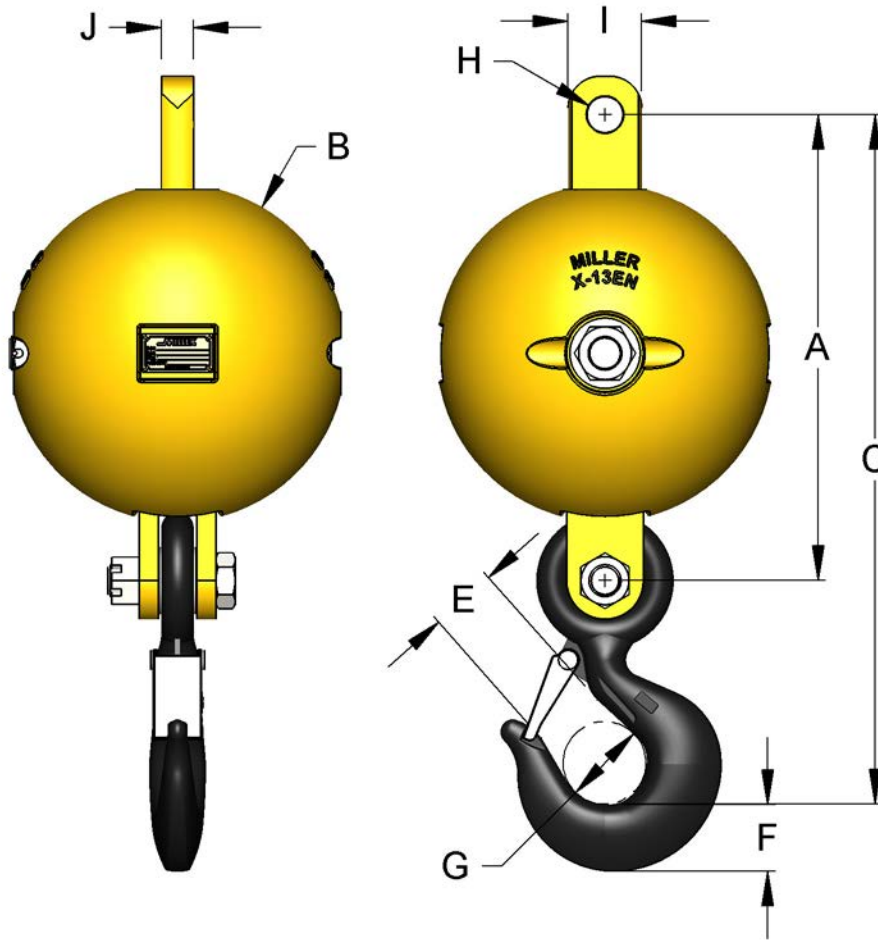


OVERHAUL BALLS- ASSEMBLIES Y-LINK

NON-SWIVELING EYE TO HOOK - TYPE 5



WLL* Tons	Model Number	A	B	C	E	F	G	H	I	J	Weight Lbs.
5	HB8-5N	13.5	8	19.88	1.61	1.81	2.5	1.03	2.5	0.88	95
8.5	HB10-5N	16.5	10	22.81	2.27	2.59	3.25	1.53	3	1.25	165
8.5	HB11-5N	17.13	11	26.78	2.27	2.59	3.25	1.53	3	1.25	215
5	HB12-5N	16.31	12	22.81	1.61	1.81	2.5	1.44	3	1.25	250
8.5	HB12B-5N	18.19	12	26.88	2.27	2.59	3.25	1.44	3	1.25	250
8.5	HB13-5N	17.38	13	26.03	2.27	2.59	3.25	1.53	3	1.25	328
15	HB13B-5N	21.75	13	32.5	3.02	3	4.25	1.81	3	1.5	364
10	HB16-5N	24.25	16	35	3.02	3	4.25	1.81	4	1.5	550
15	HB16B-5N	24.41	16	35.16	3.02	3	4.25	1.63	4	2	550
25	HB16C-5N	24.25	16	35	3.25	3.62	5	2.31	5	2.25	600
35	HB16D-5N	26.94	16	44	3	4.56	5.38	2.31	5	2.25	720
10	HB18G-5N	24.88	18	35.63	3.02	3	4.25	1.63	4	1.72	800
15	HB22GG-5N	28.25	22	39.03	3.02	3	4.25	2.03	4	1.94	1285
25	HB22H-5N	30.19	22	42.5	3.25	3.62	5	2.31	5	2.25	1375
35	HB22HH-5N	30.19	22	46.13	3	4.56	5.38	2.31	5	2.25	1425

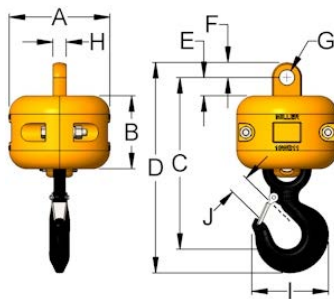
* Design factor 5:1

OVERHAUL BALLS- ECONO-LINK SWIVELER

- **Compact headache ball assemblies using Miller Econo-Link thrust bearing swivels are ideal for low head-room applications.**
- Top swiveling- ball remains stationary if wire rope twists.
- Overhaul weights from 35 to 575 lbs.
- Working Loads from 3 to 15 tons, for 1/2" to 1" wire rope.
- Easy replacement of swivel with standard Miller Econo-Link Type 181 or 281 models.
- Drop forged carbon steel hook with safety latch.
- Design factor 4:1



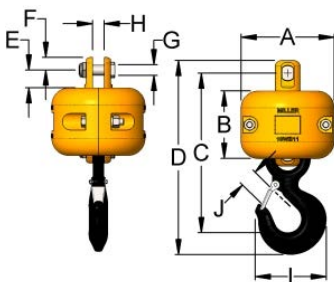
EYE TO HOOK - TYPE A



WLL* Tons	Model Number	ROPE	A	B	C	D	E	F	G	H	I	J	Weight Lbs.
3	3A35	1/2	6.0	5.0	11.27	13.84	1.13	1.13	1.06	1.00	4.81	1.36	35
6	6A100	5/8-3/4	9.0	6.5	14.17	17.48	1.38	1.50	1.41	1.19	6.27	1.61	100
6	6A250	5/8-3/4	12.5	8.0	14.17	17.48	1.38	1.50	1.41	1.19	6.27	1.61	250
10	10A200	3/4-7/8	11.0	8.0	18.78	23.00	2.38	1.63	1.66	1.44	8.30	2.27	200
10	10A325	3/4-7/8	13.0	10.0	18.78	23.00	2.38	1.63	1.66	1.44	8.30	2.27	325
15	15A320	1	13.0	9.0	23.05	27.94	2.63	1.88	2.06	1.94	10.30	3.02	320
15	15A575	1	15.0	12.0	23.05	27.94	2.63	1.88	2.06	1.94	10.30	3.02	575

* Design factor 4:1

CLEVIS TO HOOK - TYPE O



WLL* Tons	Model Number	ROPE	A	B	C	D	E	F	G	H	I	J	Weight Lbs.
3	3O35	1/2	6.0	5.0	11.64	14.27	1.38	1.19	0.75	1.00	4.81	1.36	35
6	6O100	5/8-3/4	9.0	6.5	14.92	18.04	1.94	1.31	1.00	1.13	6.27	1.61	100
6	6O250	5/8-3/4	12.5	8.0	14.92	18.04	1.94	1.31	1.00	1.13	6.27	1.61	250
10	10O200	3/4-7/8	11.0	8.0	18.91	23.00	2.25	1.50	1.25	1.38	8.30	2.27	200
10	10O325	3/4-7/8	13.0	10.0	18.91	23.00	2.25	1.50	1.25	1.38	8.30	2.27	325
15	15O320	1	13.0	9.0	23.11	27.94	2.56	1.81	1.38	1.75	10.30	3.02	320
15	15O575	1	15.0	12.0	23.11	27.94	2.56	1.81	1.38	1.75	10.30	3.02	575

* Design factor 4:1

BLOCKS- HI-LIFT BLOCKS

Wide capacity range available

- Standard capacities to 300T
- Design factor 4:1
- Larger capacities available
- Sheaves from 8" to 36"
- Wire rope sizes to 1 3/4"

Hooks- high quality forged alloy steel

- Per DIN 15401 or DIN 15402
- Other hook standards available
- Heavy duty thrust bearing
- Dual motion- swing plus 360° rotation
- Safety latch on all hooks
- Double and other hooks available

Heavy welded steel plate construction

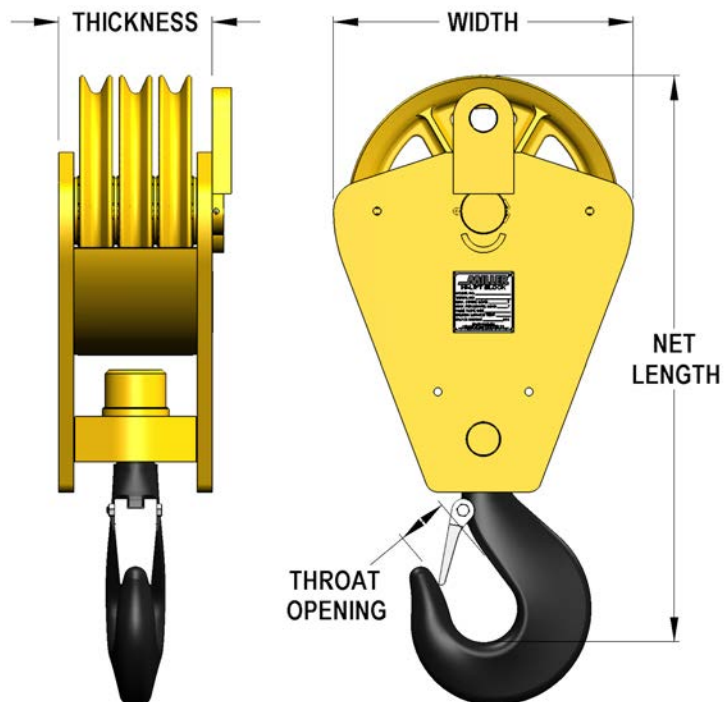
- provides rigidity and strength for longer life
- Designed for shortest possible overall length
- Enclosed sheave guard for easier threading- eliminates possibility of rope jumping sheave
- "H" models provide additional overhaul weight with detachable steel cheek plates
- "T" and "TF", extended or standard side plates- on 24" sheave models

Bearings and sheaves

- For sheave sizes 20" and below, hardened and ground sheave pin with roller bearings
- For sheaves 24" and higher, tapered roller bearings with lip seals on alloy steel sheave pin
- Bronze bushings optional
- Individual sheave lubrication for assured grease penetration.
- Heavy duty cast steel sheaves standard, roll formed/welded sheaves available
- Bronze spacers between sheaves eliminate galling

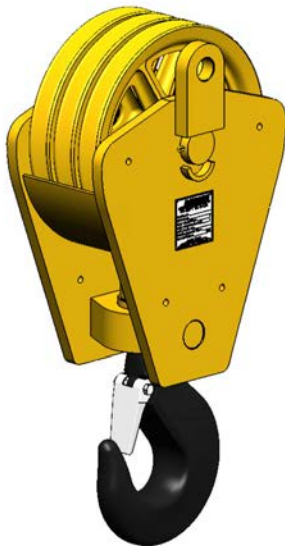
Options available

- Double hooks
- Higher load capacities
- Fittings other than hook
- Hook rotation locking device
- Third party certifications
- Cast hooks (quad)
- Custom



BLOCKS- HI-LIFT BLOCKS

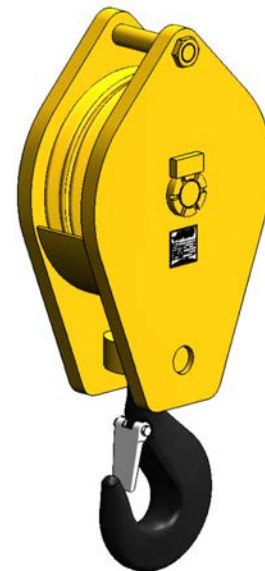
MILLER Block Model Number Key						
#	##	XX	-	###	-	XX
(Number of Sheaves)	(Sheave Outside Diameter (in))*	(Configuration)**		(Working load limit)***		(Special Designation)****
<p>*Standard Outside Diameter Sheave Range from 8 to 36"</p> <p>**Block Configuration Options:</p> <p>F - Roller Bearing Mounted Sheaves, Low Profile Side Plates</p> <p>H - Roller Bearing Mounted Sheaves, Low Profile Side Plates, Cheek weights</p> <p>TF - Tapered Roller Bearing Mounted Sheaves, Low Profile Side Plates</p> <p>T - Tapered Roller Bearing Mounted Sheaves, Extended Side Plates</p> <p>***Working Load Limit Range from 5 to 300T</p> <p>****Special Designations:</p> <p>RT - Round Top Side Plates</p> <p>LD - Locking Device, 4 Positions</p>						
****Specify Wire Rope Size When Ordering****						



MODEL NO: 318F40
 -3 SHEAVES, 18" DIAMETER
 -LOW PROFILE SIDE PLATES
 -40 TON WLL



MODEL NO: 520H80
 -5 SHEAVES, 20" DIAMETER
 -CHEEK WEIGHTS
 -80 TON WLL



MODEL NO: 224T50
 -2 SHEAVES, 24" DIAMETER
 -EXTENDED SIDE PLATES
 -50 TON WLL



BLOCKS- HI-LIFT BLOCKS

5 TON

WLL* Tons	Model Number	SHEAVE DIA. (in.)	# OF SHEAVES	THICKNESS (in.)	WIDTH (in.)	NET LENGTH (in.)	THROAT OPENING (in.)	SHEAVE PIN DIA. (in.)	STD WIRE ROPE DIA. (in.)	Weight Lbs.
5	108F5	8	1	5.75	9.5	17.5	1.88	1.63	7/16	70
5	108H5	8	1	8.75	9.5	17.5	1.88	1.63	7/16	120
5	110F5	10	1	9.5	11.5	19	1.88	1.63	9/16	90
5	110H5	10	1	13	11.5	19	1.88	1.63	9/16	160
5	112F5	12	1	7.5	13.5	22.5	1.88	2.5	5/8	140
5	112H5	12	1	10.5	13.5	22.5	1.88	2.5	5/8	240
5	114F5	14	1	7.5	15.5	27.06	1.88	2.5	3/4	160
5	114H5	14	1	11	15.5	27.06	1.88	2.5	3/4	320
5	208F5	8	2	5.75	9.5	19.75	1.88	1.63	7/16	80
5	208H5	8	2	8.75	9.5	19.75	1.88	1.63	7/16	130

10 TON

WLL* Tons	Model Number	SHEAVE DIA (in.)	# OF SHEAVES	THICKNESS (in.)	WIDTH (in.)	NET LENGTH (in.)	THROAT OPENING (in.)	SHEAVE PIN DIA. (in.)	STD WIRE ROPE DIA. (in.)	Weight Lbs.
10	108F10	8	1	5.75	9.5	19.75	2.5	1.63	7/16	80
10	108H10	8	1	8.75	9.5	19.75	2.5	1.63	7/16	130
10	110F10	10	1	6	11.5	22	2.5	1.63	9/16	100
10	110H10	10	1	9.5	11.5	22	2.5	1.63	9/16	170
10	112F10	12	1	7.5	13.5	24.75	2.5	2.5	5/8	150
10	112H10	12	1	10.5	13.5	24.75	2.5	2.5	5/8	250
10	114F10	14	1	7.5	15.5	27.75	2.5	2.5	3/4	170
10	114H10	14	1	11	15.5	27.75	2.5	2.5	3/4	330
10	116F10	16	1	8.75	17.5	30.56	2.5	3	7/8	250
10	116H10	16	1	13.75	17.5	30.56	2.5	3	7/8	490
10	118F10	18	1	8.75	19.5	32.75	2.5	3	7/8	285
10	118H10	18	1	12.75	19.5	32.75	2.5	3	7/8	585
10	208F10	8	2	5.75	9.5	19.75	2.5	1.63	7/16	85
10	208H10	8	2	8.75	9.5	19.75	2.5	1.63	7/16	135
10	210F10	10	2	6	11.5	22	2.5	1.63	9/16	110
10	210H10	10	2	9.5	11.5	22	2.5	1.63	9/16	180
10	212F10	12	2	7.5	13.5	24.75	2.5	2.5	5/8	165
10	212H10	12	2	10.5	13.5	24.75	2.5	2.5	5/8	265
10	214F10	14	2	7.5	15.5	28	2.5	2.5	3/4	215
10	214H10	14	2	11	15.5	28	2.5	2.5	3/4	365
10	308F10	8	3	7.25	9.5	19.75	2.5	1.63	7/16	95
10	308H10	8	3	10.25	9.5	19.75	2.5	1.63	7/16	145
10	310F10	10	3	7.5	11.5	22	2.5	1.63	9/16	125
10	310H10	10	3	11	11.5	22	2.5	1.63	9/16	195
10	312F10	12	3	9.75	13.5	24.75	2.5	2.5	5/8	210
10	312H10	12	3	12.75	13.5	24.75	2.5	2.5	5/8	310

BLOCKS- HI-LIFT BLOCKS

15 TON

WLL* Tons	Model Number	SHEAVE DIA. (in.)	# OF SHEAVES	THICKNESS (in.)	WIDTH (in.)	NET LENGTH (in.)	THROAT OPENING (in.)	SHEAVE PIN DIA. (in.)	STD WIRE ROPE DIA. (in.)	Weight Lbs.
15	114F15	14	1	7.5	15.5	29.63	3.38	2.5	3/4	215
15	114H15	14	1	11	15.5	29.63	3.38	2.5	3/4	365
15	116F15	16	1	8.75	17.5	32.5	3.38	3	7/8	265
15	116H15	16	1	13.75	17.5	32.5	3.38	3	7/8	585
15	118F15	18	1	8.75	19.5	34.5	3.38	3	7/8	305
15	118H15	18	1	12.75	19.5	34.5	3.38	3	7/8	605
15	210F15	10	2	7.5	11.5	25	3.38	1.63	9/16	120
15	212F15	12	2	7.5	11.5	26.88	3.38	2.5	5/8	185
15	212H15	12	2	10.5	13.5	26.88	3.38	2.5	5/8	285
15	214F15	14	2	7.5	15.5	27.06	3.38	2.5	3/4	220
15	214H15	14	2	11	15.5	27.06	3.38	2.5	3/4	380
15	216F15	16	2	8.75	17.5	32.5	3.38	3	7/8	315
15	216H15	16	2	13.75	17.5	32.5	3.38	3	7/8	555
15	310F15	10	3	7.5	11.5	22	3.38	1.63	9/16	125
15	310H15	10	3	11	11.5	22	3.38	1.63	9/16	195
15	312F15	12	3	9.75	13.5	27.06	3.38	2.5	5/8	220
15	312H15	12	3	12.75	13.5	27.06	3.38	2.5	5/8	320
15	314F15	14	3	9.75	15.5	29.5	3.38	2.5	3/4	255
15	314H15	14	3	13	15.5	29.5	3.38	2.5	3/4	415

20 TON

WLL* Tons	Model Number	SHEAVE DIA. (in.)	# OF SHEAVES	THICKNESS (in.)	WIDTH (in.)	NET LENGTH (in.)	THROAT OPENING (in.)	SHEAVE PIN DIA. (in.)	STD WIRE ROPE DIA. (IN.)	Weight Lbs.
20	114F20	14	1	7.5	15.5	29.5	3.38	2.5	3/4	215
20	114H20	14	1	11	15.5	29.5	3.38	2.5	3/4	365
20	116F20	16	1	8.75	17.5	32.69	3	3	7/8	265
20	116H20	16	1	13.75	17.5	32.69	3	3	7/8	505
20	118F20	18	1	8.75	19.5	34.25	3	3	7/8	305
20	118H20	18	1	12.75	19.5	34.25	3	3	7/8	605
20	214F20	14	2	7.5	15.5	29.5	3	2.5	3/4	220
20	214H20	14	2	11	15.5	29.5	3	2.5	3/4	380
20	216F20	16	2	8.75	17.5	32.69	3	3	7/8	315
20	216H20	16	2	13.75	17.5	32.69	3	3	7/8	555
20	218F20	18	2	8.75	19.5	34.25	3	3	7/8	340
20	218H20	18	2	12.75	19.5	34.25	3	3	7/8	640
20	312F20	12	3	9.75	13.5	27.06	3	2.5	5/8	220
20	312H20	12	3	12.75	13.5	27.06	3	2.5	5/8	320
20	314F20	14	3	9.75	15.5	29.5	3	2.5	3/4	255
20	314H20	14	3	13.25	15.5	29.5	3	2.5	3/4	415



BLOCKS- HI-LIFT BLOCKS

25 TON

WLL* Tons	Model Number	SHEAVE DIA. (in.)	# OF SHEAVES	THICKNESS (in.)	WIDTH (in.)	NET LENGTH (in.)	THROAT OPENING (in.)	SHEAVE PIN DIA. (in.)	STD WIRE ROPE DIA. (in.)	Weight Lbs.
25	116F25	16	1	8.75	17.5	33.5	3.63	3	7/8	310
25	116H25	16	1	13.75	17.5	33.5	3.63	3	7/8	460
25	118F25	18	1	8.75	19.5	34.5	3	3	7/8	330
25	118H25	18	1	12.75	19.5	34.5	3	3	7/8	630
25	120F25	20	1	9	21.5	38.5	4	3	1	400
25	120H25	20	1	13	21.5	38.5	4	3	1	765
25	214F25	14	2	7.5	15.5	29.5	3	2.5	3/4	250
25	214H25	14	2	11	15.5	29.5	3	2.5	3/4	415
25	216F25	16	2	8.75	17.5	33.75	3.63	3	7/8	340
25	216H25	16	2	13.75	17.5	33.75	3.63	3	7/8	580
25	218F25	18	2	8.75	19.5	35.75	3.63	3	7/8	365
25	218H25	18	2	12.75	19.5	35.75	3.63	3	7/8	665
25	220F25	20	2	9	21.5	38.5	3	3.25	1	445
25	220H25	20	2	13	21.5	38.5	3	3.25	1	810
25	314F25	14	3	9.75	15.5	29.88	3.63	2.5	3/4	285
25	314H25	14	3	13.25	15.5	29.88	3.63	2.5	3/4	445
25	316F25	16	3	8.75	17.5	33.75	3.63	3	7/8	415
25	316H25	16	3	13.75	17.5	33.75	3.63	3	7/8	655
25	318F25	18	3	11.38	19.5	35.75	3	3	7/8	425
25	318H25	18	3	15.38	19.5	35.75	3	3	7/8	725
25	414F25	14	4	12.88	15.5	31.19	3.5	2.5	3/4	425
25	414H25	14	4	16.38	15.5	31.19	3.5	2.5	3/4	645

30 TON

WLL* Tons	Model Number	SHEAVE DIA. (in.)	# OF SHEAVES	THICKNESS (in.)	WIDTH (in.)	NET LENGTH (in.)	THROAT OPENING (in.)	SHEAVE PIN DIA. (in.)	STD WIRE ROPE DIA. (in.)	Weight Lbs.
30	120F30	20	1	9	21.5	38.5	3	3.25	1	400
30	120H30	20	1	13	21.5	38.5	3	3.25	1	765
30	130T30	30	1	14.88	33	62.25	3.63	5	1 1/4	1750
30	214F30	14	2	7.5	15.5	31	3.63	2.5	3/4	250
30	214H30	14	2	11	15.5	31	3.63	2.5	3/4	410
30	216F30	16	2	8.75	17.5	33.75	3.63	3	7/8	340
30	216H30	16	2	13.75	17.5	33.75	3.63	3	7/8	580
30	314F30	14	3	9.75	15.5	29.88	3.63	3	3/4	285
30	314H30	14	3	13.25	15.5	29.88	3.63	3	3/4	445
30	316F30	16	3	11.38	17.5	33.75	3.63	3	7/8	415
30	316H30	16	3	16.38	17.5	33.75	3.63	3	7/8	655
30	318F30	18	3	11.38	19.5	35.34	3	3	7/8	425
30	318H30	18	3	15.38	19.5	35.34	3	3	7/8	725
30	320F30	20	3	11.75	21.5	38.5	3	3.25	1	515
30	320H30	20	3	15.75	21.5	38.5	3	3.25	1	880
30	414F30	14	4	12.88	15.5	31.19	3.5	2.5	3/4	425
30	414H30	14	4	16.38	15.5	31.19	3.5	2.5	3/4	645
30	516F30	16	5	17.63	17.5	33.81	3.5	3	7/8	520
30	516H30	16	5	22.63	17.5	33.81	3.5	3	7/8	760

BLOCKS- HI-LIFT BLOCKS

35 TON

WLL* Tons	Model Number	SHEAVE DIA. (in.)	# OF SHEAVES	THICKNESS (in.)	WIDTH (in.)	NET LENGTH (in.)	THROAT OPENING (in.)	SHEAVE PIN DIA. (in.)	STD WIRE ROPE DIA. (in.)	Weight Lbs.
35	124T35	24	1	11.5	26.63	56.81	3.75	3.5	1 1/8	1255
35	124TF35	24	1	12	26.63	50.81	3.75	3.5	1 1/8	830
35	216F35	16	2	8.75	17.5	36.38	3.75	3	7/8	385
35	216H35	16	2	13.75	17.5	36.38	3.75	3	7/8	625
35	218F35	18	2	8.75	19.5	38.5	3.75	3	7/8	410
35	218H35	18	2	12.75	19.5	38.5	3.75	3	7/8	710
35	220F35	20	2	9	21.5	41.13	3.75	3.25	1	495
35	220H35	20	2	13	21.5	41.13	3.75	3.25	1	860
35	224T35	24	2	11.5	26	56.81	3.75	3.5	1 1/8	1360
35	224TF35	24	2	12	26.63	50.81	3.75	3.5	1 1/8	945
35	314F35	14	3	975	15.5	33.5	3.63	2.5	3/4	365
35	314H35	14	3	13.25	15.5	33.5	3.63	2.5	3/4	585
35	316F35	16	3	11.38	17.5	36.38	3.75	3	7/8	455
35	316H35	16	3	16.38	17.5	36.38	3.75	3	7/8	695
35	318F35	18	3	11.38	19.5	38.38	3.75	3	7/8	465
35	318H35	18	3	15.38	19.5	38.38	3.75	3	7/8	765
35	320F35	20	3	11.75	21.5	41.38	3.75	3.25	1	565
35	320H35	20	3	15.75	21.5	41.38	3.75	3.25	1	930
35	414F35	14	4	12.88	15.5	34.06	3.75	2.5	3/4	465
35	414H35	14	4	16.38	15.5	34.06	3.75	2.5	3/4	685
35	416F35	16	4	14.75	17.5	36.38	3.75	3	7/8	585
35	416H35	16	4	19.75	17.5	36.38	3.75	3	7/8	825
35	514F35	14	5	15.75	15.5	33.94	3.75	2.5	3/4	600
35	514H35	14	5	19.25	15.5	33.94	3.75	2.5	3/4	820
35	516F35	16	5	17.63	17.5	37.94	3.75	3	7/8	780
35	516H35	16	5	22.63	17.5	37.94	3.75	3	7/8	1020

40 TON

WLL* Tons	Model Number	SHEAVE DIA. (in.)	# OF SHEAVES	THICKNESS (in.)	WIDTH (in.)	NET LENGTH (in.)	THROAT OPENING (in.)	SHEAVE PIN DIA. (in.)	STD WIRE ROPE DIA. (in.)	Weight Lbs.
40	124T40	24	1	11.5	26.63	56.68	3.75	3.5	1 1/8	1255
40	124TF40	24	1	12	26.63	56.68	3.75	3.5	1 1/8	830
40	130T40	30	1	14.88	33	65.81	3.75	5	1 1/4	1750
40	220F40	20	2	9	21.5	41.88	3.75	3.25	1	495
40	220H40	20	2	13	21.5	41.88	3.75	3.25	1	860
40	224T40	24	2	11.5	26	56.81	3.75	3.5	1 1/8	1360
40	224TF40	24	2	12	26.63	50.81	3.75	3.5	1 1/8	945
40	230T40	30	2	14.88	33	65.81	3.75	5	1 1/4	1900
40	316F40	16	3	11.38	17.5	35.38	3.75	3	7/8	455
40	316H40	16	3	16.38	17.5	35.38	3.75	3	7/8	695
40	318F40	18	3	11.38	19.5	38.88	3.75	3	7/8	465
40	318H40	18	3	15.38	19.5	38.88	3.75	3	7/8	765
40	320F40	20	3	11.75	21.5	42.06	3.75	3.25	1	565
40	320H40	20	3	15.75	21.5	42.06	3.75	3.25	1	930
40	414F40	14	4	13	15.5	35.25	3.75	2.5	3/4	465
40	414H40	14	4	16.5	15.5	35.25	3.75	2.5	3/4	685
40	416F40	16	4	14.75	17.5	37.88	3.75	3	7/8	585
40	416H40	16	4	19.75	17.5	37.88	3.75	3	7/8	825
40	418F40	18	4	14.75	19.5	39.63	3.75	3	7/8	640
40	418H40	18	4	18.75	19.5	39.63	3.75	3	7/8	940
40	514F40	14	5	15.75	15.5	34.06	3.75	2.5	3/4	600
40	514H40	14	5	19.25	15.5	34.06	3.75	2.5	3/4	820
40	516F40	16	5	17.63	17.5	37.88	3.75	3	7/8	770
40	516H40	16	5	22.63	17.5	37.88	3.75	3	7/8	1040
40	616F40	16	6	20	17.5	37.88	3.75	3	7/8	830
40	616H40	16	6	25	17.5	37.88	3.75	3	7/8	1100



BLOCKS- HI-LIFT BLOCKS

45 TON

WLL* Tons	Model Number	SHEAVE DIA. (in.)	# OF SHEAVES	THICKNESS (in.)	WIDTH (in.)	NET LENGTH (in.)	THROAT OPENING (in.)	SHEAVE PIN DIA. (in.)	STD WIRE ROPE DIA. (in.)	Weight Lbs.
45	220F45	20	2	9	21.5	41.88	4.25	3.25	1	640
45	220H45	20	2	13	21.5	41.88	4.25	3.25	1	900
45	224T45	24	2	11.5	26.63	58.69	4.25	3.5	1 1/8	1000
45	224TF45	24	2	12	26.63	52.69	4.25	3.5	1 1/8	1375
45	318F45	18	3	11.38	19.5	39.38	4.25	3	7/8	525
45	318H45	18	3	15.38	19.5	39.38	4.25	3	7/8	825
45	320F45	20	3	11.75	21.5	42.13	4.25	3.25	1	535
45	320H45	20	3	15.75	21.5	42.13	4.25	3.25	1	900
45	416F45	16	4	14.75	17.5	37.5	4.25	3	7/8	705
45	416H45	16	4	19.75	17.5	38.5	4.25	3	7/8	975
45	418F45	18	4	15.25	19.5	41.63	4.25	3	7/8	760
45	418H45	18	4	19.25	19.5	41.63	4.25	3	7/8	1050
45	514F45	14	5	15.75	15.5	35.5	4.25	2.5	3/4	605
45	514H45	14	5	19.25	15.5	35.5	4.25	2.5	3/4	970
45	516F45	16	5	17.63	17.5	37.5	4.25	3	7/8	820
45	516H45	16	5	22.63	17.5	37.5	4.25	3	7/8	1090

50 TON

WLL* Tons	Model Number	SHEAVE DIA. (in.)	# OF SHEAVES	THICKNESS (in.)	WIDTH (in.)	NET LENGTH (in.)	THROAT OPENING (in.)	SHEAVE PIN DIA. (in.)	STD WIRE ROPE DIA. (in.)	Weight Lbs.
50	130T50	30	1	14.88	33	67.69	4.25	5	1 1/4	2000
50	136T50	36	1	14.88	39	74.25	4.25	5		2500
50	220F50	20	2	9	21.5	41.88	4.25	3.25	1	535
50	220H50	20	2	13	21.5	41.88	4.25	3.25	1	900
50	224T50	24	2	11.5	26.63	58.69	4.25	3.5	1 1/8	1375
50	224TF50	24	2	12	26.63	52.69	4.25	3.5	1 1/8	1000
50	230T50	30	2	14.88	33	67.69	4.25	5	1 1/4	2160
50	318F50	18	3	11.38	19.5	39.38	4.25	3	7/8	525
50	318H50	18	3	15.38	19.5	39.38	4.25	3	7/8	825
50	320F50	20	3	11.75	21.5	42.13	4.25	3.25	1	605
50	320H50	20	3	15.75	21.5	42.13	4.25	3.25	1	970
50	324T50	24	3	16.38	26.63	62.31	4.25	3.5	1 1/8	1740
50	324TF50	24	3	12	26.63	52.69	4.25	3.5	1 1/8	1000
50	416F50	16	4	14.75	17.5	37.5	4.25	3	7/8	705
50	416H50	16	4	19.75	17.5	37.5	4.25	3	7/8	975
50	418F50	18	4	15.25	19.5	41.63	4.25	3	7/8	760
50	418H50	18	4	19.25	19.5	41.63	4.25	3	7/8	1050
50	420F50	20	4	15.5	22	42.13	4.25	3.25	1	800
50	420H50	20	4	19.5	22	42.13	4.25	3.25	1	1200
50	516F50	16	5	17.63	17.5	37.5	4.25	3	7/8	820
50	516H50	16	5	22.63	17.5	37.5	4.25	3	7/8	1090
50	518F50	18	5	16.63	20	41.63	4.25	3	7/8	1010
50	518H50	18	5	20.63	20	41.63	4.25	3	7/8	1300
50	616F50	16	6	20	17.5	37.5	4.25	3	7/8	930
50	616H50	16	6	25	17.5	37.5	4.25	3	7/8	1200

BLOCKS- HI-LIFT BLOCKS

60 TON

WLL* Tons	Model Number	SHEAVE DIA. (in.)	# OF SHEAVES	THICKNESS (in.)	WIDTH (in.)	NET LENGTH (in.)	THROAT OPENING (in.)	SHEAVE PIN DIA. (in.)	STD WIRE ROPE DIA. (in.)	Weight Lbs.
60	130T60	30	1	14.88	33	71.75	5.13	5	1 1/4	2100
60	224T60	24	2	11.5	26.63	65.75	5.13	3.5	1 1/8	1650
60	224TF60	24	2	12	26.63	59.75	5.13	3.5	1 1/8	1100
60	230T60	30	2	14.88	33	71.75	5.13	5	1 1/4	2250
60	320F60	20	3	11.75	21.5	45.88	5.13	3.5	1	945
60	320H60	20	3	15.75	21.5	45.88	5.13	3.5	1	1345
60	324T60	24	3	16.38	26.63	65.75	5.13	3.5	1 1/8	1950
60	324TF60	24	3	15.38	26.63	59.75	5.13	3.5	1 1/8	1450
60	330T60	30	3	19.94	33	71.75	5.13	5	1 1/4	2735
60	418F60	18	4	16.25	19.75	45.88	5.13	3	7/8	1010
60	418H60	18	4	20.25	19.75	45.88	5.13	3	7/8	1300
60	420F60	20	4	17.25	22	48.38	5.13	3.5	1	1110
60	420H60	20	4	21.25	22	48.38	5.13	3.5	1	1510
60	516F60	16	5	18.63	17.5	43.5	5.13	3	7/8	1060
60	516H60	16	5	23.63	17.5	43.5	5.13	3	7/8	1330
60	518F60	18	5	18.63	20	56.5	5.13	3	7/8	1110
60	518H60	18	5	18.63	20	56.5	5.13	3	7/8	1400
60	520F60	20	5	19.75	22	48.38	5.13	3.5	1	1315
60	520H60	20	5	23.75	22	48.38	5.13	4	1	1715

65 TON

WLL* Tons	Model Number	SHEAVE DIA. (in.)	# OF SHEAVES	THICKNESS (in.)	WIDTH (in.)	NET LENGTH (in.)	THROAT OPENING (in.)	SHEAVE PIN DIA. (in.)	STD WIRE ROPE DIA. (in.)	Weight Lbs.
65	420F65	20	4	17.25	22	48.38	5.13	3.5	1	1110
65	420H65	20	4	21.25	22	48.38	5.13	3.5	1	1510
65	516F65	16	5	18.63	17.5	43.5	5.13	3	7/8	830
65	516H65	16	5	23.63	17.5	43.5	5.13	3	7/8	1100
65	518F65	18	5	18.63	20	56.5	5.13	3	7/8	1100
65	518H65	18	5	22.63	20	56.5	5.13	3	7/8	1400
65	520F65	20	5	19.75	22	48.38	5.13	3.5	1	1315
65	520H65	20	5	23.75	22	48.38	5.13	3.5	1	1715
65	620F65	20	6	22.25	22	48.13	5.38	3.5	1	1450
65	620H65	20	6	26.25	22	48.13	5.38	3.5	1	1850

75 TON

WLL* Tons	Model Number	SHEAVE DIA. (in.)	# OF SHEAVES	THICKNESS (in.)	WIDTH (in.)	NET LENGTH (in.)	THROAT OPENING (in.)	SHEAVE PIN DIA. (in.)	STD WIRE ROPE DIA. (in.)	Weight Lbs.
75	136T75	36	1	14.88	42.5	80.81	5.88	5		2800
75	230T75	30	2	14.88	33	74.31	5.88	5	1 1/4	2500
75	236T75	36	2	14.88	42.5	80.81	5.88	5		3000
75	320F75	20	3	11.75	21.5	50.25	5.88	3.5	1	1045
75	320H75	20	3	15.75	21.5	50.25	5.88	3.5	1	1445
75	324T75	24	3	16.38	26.56	68.31	5.88	3.5	1 1/8	2220
75	324TF75	24	3	15.38	26.63	62.44	5.88	3.5	1 1/8	1550
75	330T75	30	3	19.94	33	74.31	5.88	5	1 1/4	2835
75	420F75	20	4	16.75	22	50.63	5.88	3.5	1	1275
75	420H75	20	4	20.75	22	50.63	5.88	3.5	1	1675
75	424T75	24	4	19.75	26.5	68.31	5.88	3.5	1 1/8	2200
75	424TF75	24	4	20.25	26.63	62.44	5.88	3.5	1 1/8	1770
75	430T75	30	4	23.31	33	74.31	5.88	5	1 1/4	3625
75	520F75	20	5	19.75	22	51	5.88	3.5	1	1435
75	520H75	20	5	23.75	22	51	5.88	3.5	1	1835
75	620F75	20	6	22.25	22	49.5	5.88	3.5	1	1550
75	620H75	20	6	26.25	22	49.5	5.88	3.5	1	1950



BLOCKS- HI-LIFT BLOCKS

80 TON

WLL* Tons	Model Number	SHEAVE DIA. (in.)	# OF SHEAVES	THICKNESS (in.)	WIDTH (in.)	NET LENGTH (in.)	THROAT OPENING (in.)	SHEAVE PIN DIA. (in.)	STD WIRE ROPE DIA. (in.)	Weight Lbs.
80	324T80	24	3	16.38	26.63	68.31	5.88	3.5	1 1/8	2220
80	324TF80	24	3	15.38	26.63	62.44	5.88	3.5	1 1/8	1550
80	420F80	20	4	16.75	21.5	50.5	5.88	3.5	1	1275
80	420H80	20	4	20.75	21.5	50.5	5.88	3.5	1	1675
80	424T80	24	4	19.75	26.5	68.44	5.88	3.5	1 1/8	2200
80	424TF80	24	4	20.25	26.63	62.44	5.88	3.5	1 1/8	1770
80	520F80	20	5	19.75	22	51	5.88	3.5	1	1435
80	520H80	20	5	23.75	22	51	5.88	3.5	1	1835
80	524T80	24	5	24.38	26.63	68.81	5.88	3.5	1 1/8	2450
80	524TF80	24	5	24.88	26.63	62.81	5.88	3.5	1 1/8	2140

90 TON

WLL* Tons	Model Number	SHEAVE DIA. (in.)	# OF SHEAVES	THICKNESS (in.)	WIDTH (in.)	NET LENGTH (in.)	THROAT OPENING (in.)	SHEAVE PIN DIA. (in.)	STD WIRE ROPE DIA. (in.)	Weight Lbs.
90	324T90	24	3	16.38	26.63	70.31	5.38	3.5	1 1/8	2385
90	324TF90	24	3	15.38	26.63	30.75	5.38	3.5	1 1/8	1715
90	424T90	24	4	19.75	26.5	70.18	5.38	3.5	1 1/8	2365
90	424TF90	24	4	20.25	26.63	60.75	5.38	3.5	1 1/8	1935
90	520F90	20	5	19.75	22	53.5	5.38	3.5	1	1600
90	520H90	20	5	23.75	22	53.5	5.38	3.5	1	2000
90	524TF90	24	5	24.88	26.63	64.88	5.38	3.5	1 1/8	2615
90	620F90	20	6	22.25	22	53.5	5.38	3.5	1	1750
90	620H90	20	6	26.25	22	53.5	5.38	3.5	1	2150
90	624T90	24	6	28	26	70.25	5.38	3.5	1 1/8	3170
90	624TF90	24	6	27	26.63	64.75	5.38	3.5	1 1/8	2800

100 TON

WLL* Tons	Model Number	SHEAVE DIA. (in.)	# OF SHEAVES	THICKNESS (in.)	WIDTH (in.)	NET LENGTH (in.)	THROAT OPENING (in.)	SHEAVE PIN DIA. (in.)	STD WIRE ROPE DIA. (in.)	Weight Lbs.
100	136T100	36	1	14.88	42.5	86.38	5.38	5		3250
100	236T100	36	2	14.88	42.5	86.38	5.38	5		3450
100	324T100	24	3	16.38	26.63	73.88	5.38	3.5	1 1/8	2535
100	324TF100	24	3	15.38	26.63	67.75	5.38	3.5	1 1/8	1800
100	330T100	30	3	19.94	33	79.88	5.38	5	1 1/4	3175
100	336T100	36	3	19.94	42.5	86.38	5.38	5		3900
100	424T100	24	4	19.75	26.5	73.75	5.38	3.5	1 1/8	2515
100	424TF100	24	4	20.25	26.63	67.75	5.38	3.5	1 1/8	2015
100	430T100	30	4	23.31	36	79.88	5.38	5	1 1/4	3725
100	436T100	36	4	23.31	42.5	86.38	5.38	5		4490
100	520F100	20	5	19.75	22	54.13	5.38	3.5	1	2110
100	520H100	20	5	23.75	22	54.13	5.38	3.5	1	2575
100	524T100	24	5	24.38	26.63	74.25	5.38	3.5	1 1/8	2970
100	524TF100	24	5	24.88	26.63	67.75	5.38	3.5	1 1/8	2500
100	530T100	30	5	28	36	79.88	5.38	5	1 1/4	4530
100	536T100	36	5	28	42.5	86.38	5.38	5		5340
100	620F100	20	6	22.25	22	54.13	5.38	3.5	1	2000
100	620H100	20	6	26.25	22	54.13	5.38	3.5	1	2400
100	624T100	24	6	28	26	74.25	5.38	3.5	1 1/8	3320
100	624TF100	24	6	27	26.63	64.75	5.38	3.5	1 1/8	2875

BLOCKS- HI-LIFT BLOCKS

115 TON

WLL* Tons	Model Number	SHEAVE DIA. (in.)	# OF SHEAVES	THICKNESS (in.)	WIDTH (in.)	NET LENGTH (in.)	THROAT OPENING (in.)	SHEAVE PIN DIA. (in.)	STD WIRE ROPE DIA. (in.)	Weight Lbs.
115	424T115	24	4	19.75	26.5	73.75	5.38	3.5	1 1/8	2515
115	424TF115	24	4	20.25	26.63	67.75	5.38	3.5	1 1/8	2015
115	524TF115	24	5	24.88	26.63	67.75	5.38	3.5	1 1/8	2500
115	620F115	20	6	22.25	22	54.13	5.38	3.5	1	2000
115	620H115	20	6	26.25	22	54.13	5.38	3.5	1	2400
115	624T115	24	6	28	26	74.25	5.38	3.5	1 1/8	3320
115	624TF115	24	6	27	26.63	64.75	5.38	3.5	1 1/8	2875

125 TON

WLL* Tons	Model Number	SHEAVE DIA. (in.)	# OF SHEAVES	THICKNESS (in.)	WIDTH (in.)	NET LENGTH (in.)	THROAT OPENING (in.)	SHEAVE PIN DIA. (in.)	STD WIRE ROPE DIA. (in.)	Weight Lbs.
125	236T125	36	2	14.88	42.5	87.38	5.5	5		3600
125	330T125	30	3	19.94	33	80.88	5.5	5	1 1/4	3200
125	336T125	36	3	19.94	42.5	87.38	5.5	5		3930
125	424T125	24	4	19.75	26.5	74.88	5.5	3.5	1 1/8	2670
125	424TF125	24	4	20.25	26.63	68.88	5.5	3.5	1 1/8	2150
125	430T125	30	4	23.31	36	80.88	5.5	5	1 1/4	3825
125	436T125	36	4	23.31	42.5	87.38	5.5	5		4590
125	524T125	24	5	24.38	26.63	75.38	5.5	3.5	1 1/8	3000
125	524TF125	24	5	27	26.63	69.38	5.5	3.5	1 1/8	2530
125	624T125	24	6	28	26	75.38	5.5	3.5	1 1/8	3350
125	624TF125	24	6	27	26.63	69.38	5.5	3.5	1 1/8	2975

135 TON

WLL* Tons	Model Number	SHEAVE DIA. (in.)	# OF SHEAVES	THICKNESS (in.)	WIDTH (in.)	NET LENGTH (in.)	THROAT OPENING (in.)	SHEAVE PIN DIA. (in.)	STD WIRE ROPE DIA. (in.)	Weight Lbs.
135	424T135	24	4	19.75	26.5	74.88	5.5	3.5	1 1/8	2670
135	424TF135	24	4	20.25	26.63	68.88	5.5	3.5	1 1/8	2150

150 TON

WLL* Tons	Model Number	SHEAVE DIA. (in.)	# OF SHEAVES	THICKNESS (in.)	WIDTH (in.)	NET LENGTH (in.)	THROAT OPENING (in.)	SHEAVE PIN DIA. (in.)	STD WIRE ROPE DIA. (in.)	Weight Lbs.
150	330T150	30	3	19.94	33	80.88	5.5	5	1 1/4	3200
150	336T150	36	3	19.94	42.5	87.88	5.5	5		3930
150	424T150	24	4	19.75	26.5	74.88	5.5	3.5	1 1/8	2670
150	424TF150	24	4	20.25	26.63	68.88	5.5	3.5	1 1/8	2150
150	430T150	30	4	23.31	36	80.88	5.5	5	1 1/4	3825
150	436T150	36	4	23.31	42.5	87.88	5.5	5		4590
150	524T150	24	5	24.38	26.63	75.38	5.5	3.5	1 1/8	3000
150	524TF150	24	5	24.88	26.63	69.38	5.5	3.5	1 1/8	2530
150	530T150	30	5	28	36	86.75	5.5	5	1 1/4	4560
150	536T150	36	5	28	42.5	87.88	5.5	5		5370
150	624T150	24	6	28	26	75.38	5.5	3.5	1 1/8	3350
150	624TF150	24	6	27	26.63	69.38	5.5	3.5	1 1/8	2975
150	630T150	30	6	31.75	36	86.75	5.5	5	1 1/4	4650
150	636T150	36	6	31.75	42.5	87.88	5.5	5		5600

BLOCKS- HI-LIFT BLOCKS

200 TON

WLL* Tons	Model Number	SHEAVE DIA. (in.)	# OF SHEAVES	THICKNESS (in.)	WIDTH (in.)	NET LENGTH (in.)	THROAT OPENING (in.)	SHEAVE PIN DIA. (in.)	STD WIRE ROPE DIA. (in.)	Weight Lbs.
200	430T200	30	4	23.31	36	89	6	5	1 1/4	4200
200	436T200	36	4	23.31	42.5	95.5	6	5		4965
200	530T200	30	5	28	36	89	6	5	1 1/4	4700
200	536T200	36	5	28	42.5	95.5	6	5		5600
200	630T200	30	6	31.75	36	89	6	5	1 1/4	4900
200	636T200	36	6	31.75	42.5	95.5	6	5		5900

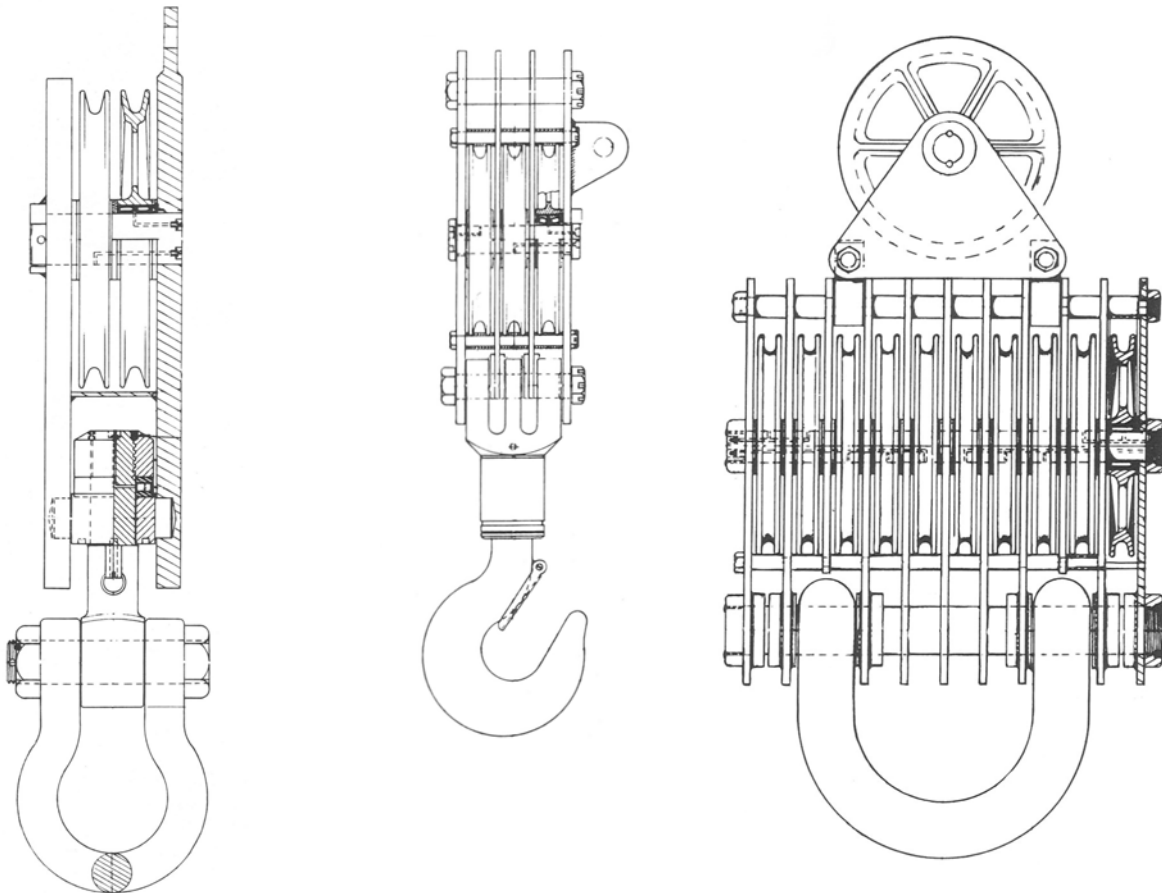
250 TON

WLL* Tons	Model Number	SHEAVE DIA. (in.)	# OF SHEAVES	THICKNESS (in.)	WIDTH (in.)	NET LENGTH (in.)	THROAT OPENING (in.)	SHEAVE PIN DIA. (in.)	STD WIRE ROPE DIA. (in.)	Weight Lbs.
250	630T250	30	6	31.75	36	93.5	7.5	5	1 1/4	5120
250	636T250	36	6	31.75	42.5	99.75	7.5	5		6125

300 TON

WLL* Tons	Model Number	SHEAVE DIA. (in.)	# OF SHEAVES	THICKNESS (in.)	WIDTH (in.)	NET LENGTH (in.)	THROAT OPENING (in.)	SHEAVE PIN DIA. (in.)	STD WIRE ROPE DIA. (in.)	Weight Lbs.
300	530T300	30	5	30	36	94.25	8	5	1 1/4	6400
300	536T300	36	5	28	42.5	100.75	7.5	5		7025
300	630T300	30	6	33.75	36	94.25	7.5	5	1 1/4	6700
300	636T300	36	6	31.75	42.5	100.75	7.5	5		7370

Custom Miller Blocks are available to suit your special requirements.
Contact us for more information.



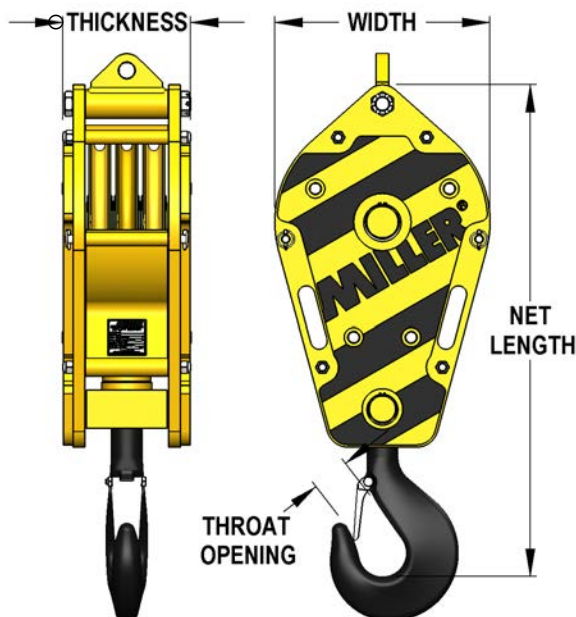
BLOCKS- MOBILE CRANE BLOCKS

- **Product Range**

- **Capacity** 15 to 80 tons standard with higher capacities available
- **Sheave** sizes, to 24" for up to 1 1/4" wire rope, 1 to 7 sheaves

- **Technical Features**

- **Quick-reeving** configuration with optional drop-away sheave guards allows easy passage of rope with end fitting in place. Dead end centered above the sheaves on 1-4 sheave blocks, 5 and up dead end to side plate.
- **Hooks** are forged alloy steel, single or duplex, in accordance with DIN15401 or DIN15402. Single hook blocks include heavy-duty locking latches. Locking latches optional for duplex hooks. All hooks are individually certified for mechanical and physical properties including Charpy impact test, and include ultrasonic and magnetic particle evaluation.
- **Design Factor** 4 to 1 minimum.
- **Bearings** for sheaves are low-friction, double-row, full complement cylindrical roller type for tight sheave alignment and high resistance to axial forces caused by variation in fleet angles and require no friction spacers between sheaves. Hook bearings are tapered roller thrust type as used in all Miller Hi-Lift blocks.
- **Lubrication** for sheave bearings via channels in the sheave pin. Hook bearing grease fitting is located in the hook upper end.
- **Hook-locking** device is available for all models over 40 tons. Allows user to lock hook every 90°.
- **Side plates** and cheek weights are full-length and provided for a range of overhaul weights.



Model Number Key

#	##	MC	###	-	#	XX
<i>Number of Sheaves</i>	<i>Sheave O.D.</i>	<i>Mobile Crane Block</i>	<i>Working Load Limit</i>		<i>Cheek Weights</i>	<i>Option Code*</i>

**Option Codes*
D - Duplex Hook
DL - Duplex Hook, Locking Latches
LD - Hook Locking Device, 4 Position
DLD - Duplex Hook, 4 Position Locking Device
DLLD - Duplex Hook, Locking Latches, 4 Position Locking Device



BLOCKS- MOBILE CRANE BLOCKS

15 TON

WLL * Tons	Model Number	Sheave Diameter (in)	Number of Sheaves	Thickness (in)	Width (in)	Net Length (in)	Throat Opening (in)	Wire Rope Range (in)	Weight (lbs)
15	110MC15	10	1	7.50	14.25	33.43	2.48	1/2 to 5/8"	240
15	110MC15-1	10	1	9.00	14.25	33.43	2.48	1/2 to 5/8"	310
15	112MC15	12	1	8.44	16.00	36.31	2.48	1/2 to 3/4"	315
15	112MC15-1	12	1	9.94	16.00	36.31	2.48	1/2 to 3/4"	400
15	114MC15	14	1	8.44	18.00	39.00	2.48	1/2 to 3/4"	360
15	114MC15-1	14	1	9.94	18.00	39.00	2.48	1/2 to 3/4"	470
15	116MC15	16	1	9.16	20.25	41.78	2.48	9/16 to 7/8"	460
15	116MC15-1	16	1	10.66	20.25	41.78	2.48	9/16 to 7/8"	590
15	118MC15	18	1	9.98	22.5	39.38	2.48	5/8 to 1"	365
15	118MC15-1	18	1	11.98	22.5	39.38	2.48	5/8 to 1"	535
15	210MC15	10	2	7.47	14.25	33.43	2.48	1/2 to 5/8"	255
15	210MC15-1	10	2	8.97	14.25	33.43	2.48	1/2 to 5/8"	325
15	212MC15	12	2	8.44	16.00	36.31	2.48	1/2 to 3/4"	335
15	212MC15-1	12	2	9.94	16.00	36.31	2.48	1/2 to 3/4"	420
15	214MC15	14	2	8.44	18.00	39.00	2.48	1/2 to 3/4"	380
15	214MC15-1	14	2	10.44	18.00	39.00	2.48	1/2 to 3/4"	490
15	216MC15	16	2	9.16	20.25	41.78	2.48	9/16 to 7/8"	490
15	216MC15-1	16	2	10.66	20.25	41.78	2.48	9/16 to 7/8"	625
15	218MC15	18	2	9.98	22.5	39.38	2.48	5/8 to 1"	405
15	218MC15-1	18	2	11.98	22.5	39.38	2.48	5/8 to 1"	575
15	310MC15	10	3	7.47	14.25	33.43	2.48	1/2 to 5/8"	295
15	310MC15-1	10	3	8.97	14.25	33.43	2.48	1/2 to 5/8"	345
15	312MC15	12	3	8.44	16.00	36.31	2.48	1/2 to 3/4"	365
15	312MC15-1	12	3	9.94	16.00	36.31	2.48	1/2 to 3/4"	450
15	314MC15	14	3	8.44	18.00	39.00	2.48	1/2 to 3/4"	425
15	314MC15-1	14	3	9.94	18.00	39.00	2.48	1/2 to 3/4"	530
15	316MC15	16	3	9.16	20.25	37.38	2.48	9/16 to 7/8"	540
15	316MC15-1	16	3	10.66	20.25	37.38	2.48	9/16 to 7/8"	675
15	318MC15	18	3	9.98	22.5	39.38	2.48	5/8 to 1"	445
15	318MC15-1	18	3	11.98	22.5	39.38	2.48	5/8 to 1"	615
15	412MC15	12	4	10.56	16.00	42.18	2.48	1/2 to 3/4"	430
15	412MC15-1	12	4	12.06	16.00	42.18	2.48	1/2 to 3/4"	515
15	414MC15	14	4	10.56	18.00	39.00	2.48	1/2 to 3/4"	485
15	414MC15-1	14	4	12.06	18.00	39.00	2.48	1/2 to 3/4"	595

BLOCKS- MOBILE CRANE BLOCKS

20 TON

WLL * Tons	Model Number	Sheave Diameter (in)	Number of Sheaves	Thickness (in)	Width (in)	Net Length (in)	Throat Opening (in)	Wire Rope Range (in)	Weight (lbs)
20	110MC20-1	10	1	9.00	14.25	33.43	2.48	1/2 to 5/8"	310
20	112MC20	12	1	8.44	16.00	36.31	2.48	1/2 to 3/4"	315
20	112MC20-1	12	1	9.94	16.00	36.31	2.48	1/2 to 3/4"	400
20	114MC20	14	1	8.44	18.00	39.00	2.48	1/2 to 3/4"	360
20	114MC20-1	14	1	9.94	18.00	39.00	2.48	1/2 to 3/4"	470
20	116MC20	16	1	9.16	20.25	41.78	2.48	9/16 to 7/8"	460
20	116MC20-1	16	1	10.66	20.25	41.78	2.48	9/16 to 7/8"	590
20	118MC20	18	1	9.98	22.5	40.38	2.8	5/8 to 1"	375
20	118MC20-1	18	1	11.98	22.5	40.38	2.8	5/8 to 1"	525
20	210MC20	10	2	7.47	14.25	33.43	2.48	1/2 to 5/8"	255
20	210MC20-1	10	2	8.97	14.25	33.43	2.48	1/2 to 5/8"	325
20	212MC20	12	2	8.44	16.00	36.31	2.48	1/2 to 3/4"	335
20	212MC20-1	12	2	9.94	16.00	36.31	2.48	1/2 to 3/4"	420
20	214MC20	14	2	8.44	18.00	39.00	2.48	1/2 to 3/4"	380
20	214MC20-1	14	2	10.44	18.00	39.00	2.48	1/2 to 3/4"	490
20	216MC20	16	2	9.16	20.25	41.78	2.48	9/16 to 7/8"	490
20	216MC20-1	16	2	10.66	20.25	41.78	2.48	9/16 to 7/8"	625
20	218MC20	18	2	9.98	22.5	40.38	2.8	5/8 to 1"	415
20	218MC20-1	18	2	11.98	22.5	40.38	2.8	5/8 to 1"	565
20	310MC20	10	3	7.47	14.25	33.43	2.48	1/2 to 5/8"	295
20	310MC20-1	10	3	8.97	14.25	33.43	2.48	1/2 to 5/8"	345
20	312MC20	12	3	8.44	16.00	36.31	2.48	1/2 to 3/4"	365
20	312MC20-1	12	3	9.94	16.00	36.31	2.48	1/2 to 3/4"	450
20	314MC20	14	3	8.44	18.00	39.00	2.48	1/2 to 3/4"	425
20	314MC20-1	14	3	9.94	18.00	39.00	2.48	1/2 to 3/4"	530
20	316MC20	16	3	9.16	20.25	37.38	2.48	9/16 to 7/8"	540
20	316MC20-1	16	3	10.66	20.25	37.38	2.48	9/16 to 7/8"	675
20	318MC20	18	3	9.98	22.5	40.38	2.8	5/8 to 1"	455
20	318MC20-1	18	3	11.98	22.5	40.38	2.8	5/8 to 1"	605
20	412MC20	12	4	10.56	16.00	42.18	2.48	1/2 to 3/4"	430
20	412MC20-1	12	4	12.06	16.00	42.18	2.48	1/2 to 3/4"	515
20	414MC20	14	4	10.56	18.00	39.00	2.48	1/2 to 3/4"	485
20	414MC20-1	14	4	12.06	18.00	39.00	2.48	1/2 to 3/4"	595

25 TON

WLL * Tons	Model Number	Sheave Diameter (in)	Number of Sheaves	Thickness (in)	Width (in)	Net Length (in)	Throat Opening (in)	Wire Rope Range (in)	Weight (lbs)
25	116MC25-1	16	1	10.94	20.50	45.88	3.15	9/16 to 7/8"	670
25	118MC25	18	1	9.98	22.50	48.25	3.15	5/8 to 1"	595
25	118MC25-1	18	1	11.98	22.50	48.25	3.15	5/8 to 1"	800
25	120MC25	20	1	9.98	24.50	52.00	3.15	3/4 to 1-1/8"	690
25	120MC25-1	20	1	11.98	24.50	52.00	3.15	3/4 to 1-1/8"	935
25	214MC25	14	2	8.44	18.50	43.25	3.15	1/2 to 3/4"	440
25	214MC25-1	14	2	10.44	18.50	43.25	3.15	1/2 to 3/4"	580
25	216MC25	16	2	9.16	20.50	45.88	3.15	9/16 to 7/8"	540
25	216MC25-1	16	2	10.94	20.50	45.88	3.15	9/16 to 7/8"	705
25	218MC25	18	2	9.98	22.50	44.56	3.15	5/8 to 1"	655
25	218MC25-1	18	2	11.98	22.50	44.56	3.15	5/8 to 1"	860
25	220MC25	20	2	9.98	24.50	52.00	3.15	3/4 to 1-1/8"	765
25	220MC25-1	20	2	11.98	24.50	52.00	3.15	3/4 to 1-1/8"	1000
25	314MC25	14	3	8.44	18.50	43.25	3.15	1/2 to 3/4"	475
25	314MC25-1	14	3	10.44	18.50	43.25	3.15	1/2 to 3/4"	615
25	316MC25	16	3	9.16	20.50	43.88	3.15	9/16 to 7/8"	590
25	316MC25-1	16	3	10.94	20.50	43.88	3.15	9/16 to 7/8"	750
25	318MC25	18	3	9.98	22.50	48.25	3.15	5/8 to 1"	745
25	318MC25-1	18	3	11.98	22.50	48.25	3.15	5/8 to 1"	945
25	320MC25	20	3	9.98	24.50	52.00	3.15	3/4 to 1-1/8"	855
25	320MC25-1	20	3	11.98	24.50	52.00	3.15	3/4 to 1-1/8"	1100
25	414MC25	14	4	10.56	18.25	36.88	3.15	1/2 to 3/4"	480
25	414MC25-1	14	4	12.56	18.25	36.88	3.15	1/2 to 3/4"	580



BLOCKS- MOBILE CRANE BLOCKS

30 TON

WLL * Tons	Model Number	Sheave Diameter (in)	Number of Sheaves	Thickness (in)	Width (in)	Net Length (in)	Throat Opening (in)	Wire Rope Range (in)	Weight (lbs)
30	116MC30-1	16	1	10.94	20.50	45.88	3.15	9/16 to 7/8"	670
30	118MC30	18	1	9.98	22.50	48.25	3.15	5/8 to 1"	595
30	118MC30-1	18	1	11.98	22.50	48.25	3.15	5/8 to 1"	800
30	120MC30	20	1	9.98	24.50	52.00	3.15	3/4 to 1-1/8"	690
30	120MC30-1	20	1	11.98	24.50	52.00	3.15	3/4 to 1-1/8"	935
30	214MC30	14	2	8.44	18.50	43.25	3.15	1/2 to 3/4"	440
30	214MC30-1	14	2	10.44	18.50	43.25	3.15	1/2 to 3/4"	580
30	216MC30	16	2	9.16	20.50	45.88	3.15	9/16 to 7/8"	540
30	216MC30-1	16	2	10.94	20.50	45.88	3.15	9/16 to 7/8"	705
30	218MC30	18	2	9.98	22.50	44.56	3.15	5/8 to 1"	655
30	218MC30-1	18	2	11.98	22.50	44.56	3.15	5/8 to 1"	860
30	220MC30	20	2	9.98	24.50	52.00	3.15	3/4 to 1-1/8"	765
30	220MC30-1	20	2	11.98	24.50	52.00	3.15	3/4 to 1-1/8"	1000
30	314MC30	14	3	8.44	18.50	43.25	3.15	1/2 to 3/4"	475
30	314MC30-1	14	3	10.44	18.50	43.25	3.15	1/2 to 3/4"	615
30	316MC30	16	3	9.16	20.50	43.88	3.15	9/16 to 7/8"	590
30	316MC30-1	16	3	10.94	20.50	43.88	3.15	9/16 to 7/8"	750
30	318MC30	18	3	9.98	22.50	48.25	3.15	5/8 to 1"	745
30	318MC30-1	18	3	11.98	22.50	48.25	3.15	5/8 to 1"	945
30	320MC30	20	3	9.98	24.50	52.00	3.15	3/4 to 1-1/8"	855
30	320MC30-1	20	3	11.98	24.50	52.00	3.15	3/4 to 1-1/8"	1100
30	414MC30	14	4	10.56	18.25	37.88	3.15	1/2 to 3/4"	480
30	414MC30-1	14	4	12.56	18.25	37.88	3.15	1/2 to 3/4"	580

35 TON

WLL * Tons	Model Number	Sheave Diameter (in)	Number of Sheaves	Thickness (in)	Width (in)	Net Length (in)	Throat Opening (in)	Wire Rope Range (in)	Weight (lbs)
35	124MC35-1	24	1	14.02	28.50	58.25	3.54	7/8 to 1-1/4"	1475
35	220MC35	20	2	10.48	24.50	52.00	3.54	3/4 to 1-1/8"	910
35	220MC35-1	20	2	12.48	24.50	52.00	3.54	3/4 to 1-1/8"	1160
35	224MC35	24	2	12.02	28.50	58.25	3.54	7/8 to 1-1/4"	1260
35	224MC35-1	24	2	14.02	28.50	58.25	3.54	7/8 to 1-1/4"	1610
35	314MC35	14	3	8.94	18.50	42.88	3.54	1/2 to 3/4"	525
35	314MC35-1	14	3	10.94	18.50	42.88	3.54	1/2 to 3/4"	635
35	316MC35	16	3	9.66	20.50	46.75	3.54	9/16 to 7/8"	720
35	316MC35-1	16	3	11.66	20.50	46.75	3.54	9/16 to 7/8"	900
35	318MC35	18	3	10.48	22.50	49.38	3.54	5/8 to 1"	860
35	318MC35-1	18	3	12.48	22.50	49.38	3.54	5/8 to 1"	1065
35	320MC35	20	3	10.48	24.50	52.00	3.54	3/4 to 1-1/8"	1000
35	320MC35-1	20	3	12.48	24.50	52.00	3.54	3/4 to 1-1/8"	1250
35	414MC35	14	4	11.06	18.25	43.63	3.54	1/2 to 3/4"	580
35	414MC35-1	14	4	13.06	18.25	43.63	3.54	1/2 to 3/4"	690
35	416MC35	16	4	12.02	20.50	46.75	3.54	9/16 to 7/8"	825
35	416MC35-1	16	4	14.02	20.50	46.75	3.54	9/16 to 7/8"	1000
35	418MC35	18	4	13.13	22.50	49.38	3.54	5/8 to 1"	980
35	418MC35-1	18	4	15.13	22.50	49.38	3.54	5/8 to 1"	1190
35	514MC35	14	5	13.19	18.25	43.63	3.54	1/2 to 3/4"	645
35	514MC35-1	14	5	15.19	18.25	43.63	3.54	1/2 to 3/4"	755
35	516MC35	16	5	14.38	20.31	47.19	3.54	9/16 to 7/8"	715
35	516MC35-1	16	5	16.38	20.31	47.19	3.54	9/16 to 7/8"	875
35	616MC35	16	6	16.75	20.31	48.19	3.54	9/16 to 7/8"	790
35	616MC35-1	16	6	18.75	20.31	48.19	3.54	9/16 to 7/8"	950

BLOCKS- MOBILE CRANE BLOCKS

40 TON

WLL * Tons	Model Number	Sheave Diameter (in)	Number of Sheaves	Thickness (in)	Width (in)	Net Length (in)	Throat Opening (in)	Wire Rope Range (in)	Weight (lbs)
40	124MC40-1	24	1	14.02	28.50	58.25	3.54	7/8 to 1-1/4"	1475
40	220MC40	20	2	10.48	24.50	52.00	3.54	3/4 to 1-1/8"	910
40	220MC40-1	20	2	12.48	24.50	52.00	3.54	3/4 to 1-1/8"	1160
40	224MC40	24	2	12.02	28.50	58.25	3.54	7/8 to 1-1/4"	1260
40	224MC40-1	24	2	14.02	28.50	58.25	3.54	7/8 to 1-1/4"	1610
40	314MC40	14	3	8.94	18.50	42.88	3.54	1/2 to 3/4"	525
40	314MC40-1	14	3	10.94	18.50	42.88	3.54	1/2 to 3/4"	635
40	316MC40	16	3	9.66	20.50	46.75	3.54	9/16 to 7/8"	720
40	316MC40-1	16	3	11.66	20.50	46.75	3.54	9/16 to 7/8"	900
40	318MC40	18	3	10.48	22.50	49.38	3.54	5/8 to 1"	860
40	318MC40-1	18	3	12.48	22.50	49.38	3.54	5/8 to 1"	1065
40	320MC40	20	3	10.48	24.50	52.00	3.54	3/4 to 1-1/8"	1000
40	320MC40-1	20	3	12.48	24.50	52.00	3.54	3/4 to 1-1/8"	1250
40	414MC40	14	4	11.06	18.25	43.63	3.54	1/2 to 3/4"	580
40	414MC40-1	14	4	13.06	18.25	43.63	3.54	1/2 to 3/4"	690
40	416MC40	16	4	12.02	20.50	46.75	3.54	9/16 to 7/8"	825
40	416MC40-1	16	4	14.02	20.50	46.75	3.54	9/16 to 7/8"	1000
40	418MC40	18	4	13.13	22.50	49.38	3.54	5/8 to 1"	980
40	418MC40-1	18	4	15.13	22.50	49.38	3.54	5/8 to 1"	1190
40	514MC40	14	5	13.19	18.25	43.63	3.54	1/2 to 3/4"	645
40	514MC40-1	14	5	15.19	18.25	43.63	3.54	1/2 to 3/4"	755
40	516MC40	16	5	14.38	20.31	47.19	3.54	9/16 to 7/8"	715
40	516MC40-1	16	5	16.38	20.31	47.19	3.54	9/16 to 7/8"	875
40	616MC40	16	6	16.75	20.31	48.19	3.54	9/16 to 7/8"	790
40	616MC40-1	16	6	18.75	20.31	48.19	3.54	9/16 to 7/8"	950

45 TON

WLL * Tons	Model Number	Sheave Diameter (in)	Number of Sheaves	Thickness (in)	Width (in)	Net Length (in)	Throat Opening (in)	Wire Rope Range (in)	Weight (lbs)
45	220MC45-1	20	2	12.48	24.50	55.21	3.94	3/4 to 1-1/8"	1245
45	224MC45	24	2	12.02	28.50	59.50	3.94	7/8 to 1-1/4"	1320
45	224MC45-1	24	2	14.02	28.50	59.50	3.94	7/8 to 1-1/4"	1675
45	314MC45	14	3	8.94	18.25	43.59	3.94	1/2 to 3/4"	525
45	314MC45-1	14	3	10.94	18.25	43.59	3.94	1/2 to 3/4"	655
45	316MC45	16	3	9.66	20.50	49.50	3.94	9/16 to 7/8"	780
45	316MC45-1	16	3	11.66	20.50	49.50	3.94	9/16 to 7/8"	970
45	318MC45	18	3	10.48	22.50	51.65	3.94	5/8 to 1"	935
45	318MC45-1	18	3	12.48	22.50	51.65	3.94	5/8 to 1"	1155
45	320MC45	20	3	10.48	24.50	55.21	3.94	3/4 to 1-1/8"	1070
45	320MC45-1	20	3	12.48	24.50	55.21	3.94	3/4 to 1-1/8"	1335
45	324MC45	24	3	12.02	28.50	59.50	3.94	7/8 to 1-1/4"	1480
45	324MC45-1	24	3	14.02	28.50	59.50	3.94	7/8 to 1-1/4"	1840
45	414MC45	14	4	11.06	18.25	43.59	3.94	1/2 to 3/4"	570
45	414MC45-1	14	4	13.06	18.25	43.59	3.94	1/2 to 3/4"	700
45	416MC45	16	4	12.02	20.50	49.25	3.94	9/16 to 7/8"	890
45	416MC45-1	16	4	14.02	20.50	49.25	3.94	9/16 to 7/8"	1080
45	418MC45	18	4	13.13	22.50	51.65	3.94	5/8 to 1"	1060
45	418MC45-1	18	4	15.13	22.50	51.65	3.94	5/8 to 1"	1380
45	420MC45	20	4	13.13	24.50	55.21	3.94	3/4 to 1-1/8"	1225
45	420MC45-1	20	4	15.13	24.50	55.21	3.94	3/4 to 1-1/8"	1490
45	514MC45	14	5	13.19	18.25	43.59	3.94	1/2 to 3/4"	630
45	514MC45-1	14	5	15.19	18.25	43.59	3.94	1/2 to 3/4"	760
45	516MC45	16	5	14.38	20.31	47.38	3.94	9/16 to 7/8"	720
45	516MC45-1	16	5	16.38	20.31	47.38	3.94	9/16 to 7/8"	895
45	518MC45	18	5	15.75	22.5	49.38	3.94	5/8 to 1"	820
45	518MC45-1	18	5	17.75	22.5	49.38	3.94	5/8 to 1"	1045
45	616MC45	16	6	16.75	20.31	47.38	3.94	9/16 to 7/8"	780
45	616MC45-1	16	6	18.75	20.31	47.38	3.94	9/16 to 7/8"	955



BLOCKS- MOBILE CRANE BLOCKS

50 TON

WLL * Tons	Model Number	Sheave Diameter (in)	Number of Sheaves	Thickness (in)	Width (in)	Net Length (in)	Throat Opening (in)	Wire Rope Range (in)	Weight (lbs)
50	220MC50-1	20	2	12.48	24.50	55.21	3.94	3/4 to 1-1/8"	1245
50	224MC50	24	2	12.02	28.50	59.50	3.94	7/8 to 1-1/4"	1320
50	224MC50-1	24	2	14.02	28.50	59.50	3.94	7/8 to 1-1/4"	1675
50	314MC50	14	3	8.94	18.25	43.59	3.94	1/2 to 3/4"	525
50	314MC50-1	14	3	10.94	18.25	43.59	3.94	1/2 to 3/4"	655
50	316MC50	16	3	9.66	20.50	49.50	3.94	9/16 to 7/8"	780
50	316MC50-1	16	3	11.66	20.50	49.50	3.94	9/16 to 7/8"	970
50	318MC50	18	3	10.48	22.50	51.65	3.94	5/8 to 1"	935
50	318MC50-1	18	3	12.48	22.50	51.65	3.94	5/8 to 1"	1155
50	320MC50	20	3	10.48	24.50	55.21	3.94	3/4 to 1-1/8"	1070
50	320MC50-1	20	3	12.48	24.50	55.21	3.94	3/4 to 1-1/8"	1335
50	324MC50	24	3	12.02	28.50	59.50	3.94	7/8 to 1-1/4"	1480
50	324MC50-1	24	3	14.02	28.50	59.50	3.94	7/8 to 1-1/4"	1840
50	414MC50	14	4	11.06	18.25	43.59	3.94	1/2 to 3/4"	570
50	414MC50-1	14	4	13.06	18.25	43.59	3.94	1/2 to 3/4"	700
50	416MC50	16	4	12.02	20.50	49.25	3.94	9/16 to 7/8"	890
50	416MC50-1	16	4	14.02	20.50	49.25	3.94	9/16 to 7/8"	1080
50	418MC50	18	4	13.13	22.50	51.65	3.94	5/8 to 1"	1060
50	418MC50-1	18	4	15.13	22.50	51.65	3.94	5/8 to 1"	1380
50	420MC50	20	4	13.13	24.50	55.21	3.94	3/4 to 1-1/8"	1225
50	420MC50-1	20	4	15.13	24.50	55.21	3.94	3/4 to 1-1/8"	1490
50	514MC50	14	5	13.19	18.25	43.59	3.94	1/2 to 3/4"	630
50	514MC50-1	14	5	15.19	18.25	43.59	3.94	1/2 to 3/4"	760
50	516MC50	16	5	14.38	20.31	47.38	3.94	9/16 to 7/8"	720
50	516MC50-1	16	5	16.38	20.31	47.38	3.94	9/16 to 7/8"	895
50	518MC50	18	5	15.75	22.5	49.38	3.94	5/8 to 1"	820
50	518MC50-1	18	5	17.75	22.5	49.38	3.94	5/8 to 1"	1045
50	616MC50	16	6	16.75	20.31	47.38	3.94	9/16 to 7/8"	780
50	616MC50-1	16	6	18.75	20.31	47.38	3.94	9/16 to 7/8"	955

55 TON

WLL * Tons	Model Number	Sheave Diameter (in)	Number of Sheaves	Thickness (in)	Width (in)	Net Length (in)	Throat Opening (in)	Wire Rope Range (in)	Weight (lbs)
55	224MC55-1	24	2	14.52	28.88	60.06	4.41	7/8 to 1-1/4"	1475
55	318MC55	18	3	10.98	22.50	53.66	4.41	5/8 to 1"	1080
55	318MC55-1	18	3	12.98	22.50	53.66	4.41	5/8 to 1"	1300
55	320MC55	20	3	10.98	24.50	56.79	4.41	3/4 to 1-1/8"	1235
55	320MC55-1	20	3	12.98	24.50	56.79	4.41	3/4 to 1-1/8"	1500
55	324MC55	24	3	12.52	28.50	61.41	4.41	7/8 to 1-1/4"	1700
55	324MC55-1	24	3	14.52	28.50	61.41	4.41	7/8 to 1-1/4"	2055
55	416MC55	16	4	12.52	20.31	50.13	4.41	9/16 to 7/8"	1000
55	416MC55-1	16	4	14.52	20.31	50.13	4.41	9/16 to 7/8"	1185
55	418MC55	18	4	13.63	22.5	52.88	4.41	5/8 to 1"	1080
55	418MC55-1	18	4	15.63	22.5	52.88	4.41	5/8 to 1"	1310
55	420MC55	20	4	13.63	24.50	56.79	4.41	3/4 to 1-1/8"	1400
55	420MC55-1	20	4	15.63	24.50	56.79	4.41	3/4 to 1-1/8"	1670
55	516MC55	16	5	14.88	20.31	50.13	4.41	9/16 to 7/8"	1100
55	516MC55-1	16	5	16.88	20.31	50.13	4.41	9/16 to 7/8"	1285
55	518MC55	18	5	16.25	22.5	52.88	4.41	5/8 to 1"	1160
55	518MC55-1	18	5	18.25	22.5	52.88	4.41	5/8 to 1"	1490
55	520MC55	20	5	16.25	24.50	56.79	4.41	3/4 to 1-1/8"	1565
55	520MC55-1	20	5	18.25	24.50	56.79	4.41	3/4 to 1-1/8"	1830
55	620MC55	20	6	18.89	24.63	56.06	4.41	3/4 to 1-1/8"	1420
55	620MC55-1	20	6	20.89	24.63	56.06	4.41	3/4 to 1-1/8"	1700

BLOCKS- MOBILE CRANE BLOCKS

65 TON

WLL * Tons	Model Number	Sheave Diameter (in)	Number of Sheaves	Thickness (in)	Width (in)	Net Length (in)	Throat Opening (in)	Wire Rope Range (in)	Weight (lbs)
65	224MC65-1	24	2	14.52	28.88	60.06	4.41	7/8 to 1-1/4"	1475
65	318MC65	18	3	10.98	22.50	53.66	4.41	5/8 to 1"	1080
65	318MC65-1	18	3	12.98	22.50	53.66	4.41	5/8 to 1"	1300
65	320MC65	20	3	10.98	24.50	56.79	4.41	3/4 to 1-1/8"	1235
65	320MC65-1	20	3	12.98	24.50	56.79	4.41	3/4 to 1-1/8"	1500
65	324MC65	24	3	12.52	28.50	61.41	4.41	7/8 to 1-1/4"	1700
65	324MC65-1	24	3	14.52	28.50	61.41	4.41	7/8 to 1-1/4"	2055
65	416MC65	16	4	12.52	20.31	50.13	4.41	9/16 to 7/8"	1000
65	416MC65-1	16	4	14.52	20.31	50.13	4.41	9/16 to 7/8"	1185
65	418MC65	18	4	13.63	22.5	52.88	4.41	5/8 to 1"	1080
65	418MC65-1	18	4	15.63	22.5	52.88	4.41	5/8 to 1"	1310
65	420MC65	20	4	13.63	24.50	56.79	4.41	3/4 to 1-1/8"	1400
65	420MC65-1	20	4	15.63	24.50	56.79	4.41	3/4 to 1-1/8"	1670
65	516MC65	16	5	14.88	20.31	50.13	4.41	9/16 to 7/8"	1100
65	516MC65-1	16	5	16.88	20.31	50.13	4.41	9/16 to 7/8"	1285
65	518MC65	18	5	16.25	22.5	52.88	4.41	5/8 to 1"	1160
65	518MC65-1	18	5	18.25	22.5	52.88	4.41	5/8 to 1"	1490
65	520MC65	20	5	16.25	24.50	56.79	4.41	3/4 to 1-1/8"	1565
65	520MC65-1	20	5	18.25	24.50	56.79	4.41	3/4 to 1-1/8"	1830
65	620MC65	20	6	18.89	24.63	56.06	4.41	3/4 to 1-1/8"	1420
65	620MC65-1	20	6	20.89	24.63	56.06	4.41	3/4 to 1-1/8"	1700

70 TON

WLL * Tons	Model Number	Sheave Diameter (in)	Number of Sheaves	Thickness (in)	Width (in)	Net Length (in)	Throat Opening (in)	Wire Rope Range (in)	Weight (lbs)
70	320MC70-1	20	3	13.48	24.50	61.00	4.92	3/4 to 1-1/8"	1810
70	324MC70	24	3	13.02	28.50	65.18	4.92	7/8 to 1-1/4"	2000
70	324MC70-1	24	3	15.02	28.50	65.18	4.92	7/8 to 1-1/4"	2380
70	418MC70	18	4	14.13	22.5	58.75	4.92	5/8 to 1"	1430
70	418MC70-1	18	4	16.13	22.5	58.75	4.92	5/8 to 1"	1680
70	420MC70	20	4	14.13	24.50	61.00	4.92	3/4 to 1-1/8"	1685
70	420MC70-1	20	4	16.13	24.50	61.00	4.92	3/4 to 1-1/8"	1980
70	424MC70	24	4	16.16	28.50	65.18	4.92	7/8 to 1-1/4"	2270
70	424MC70-1	24	4	18.16	28.50	65.18	4.92	7/8 to 1-1/4"	2660
70	518MC70	18	5	16.75	22.5	58.75	4.92	5/8 to 1"	1540
70	518MC70-1	18	5	18.75	22.5	58.75	4.92	5/8 to 1"	1790
70	520MC70	20	5	16.75	24.63	62.31	4.92	3/4 to 1-1/8"	1615
70	520MC70-1	20	5	18.75	24.63	62.31	4.92	3/4 to 1-1/8"	1915
70	524MC70	24	5	19.31	28.50	65.18	4.92	7/8 to 1-1/4"	2535
70	524MC70-1	24	5	21.31	28.50	65.18	4.92	7/8 to 1-1/4"	2925
70	620MC70	20	6	19.39	22.5	62.31	4.92	3/4 to 1-1/8"	1785
70	620MC70-1	20	6	21.39	22.5	62.31	4.92	3/4 to 1-1/8"	2085